



NURSING VISION

RAJAS

EYE & RETINA RESEARCH CENTRE



ADVANCED

PASCAL LASER

For retinal diseases

PASCAL LASER

(Pattern Scan Laser)

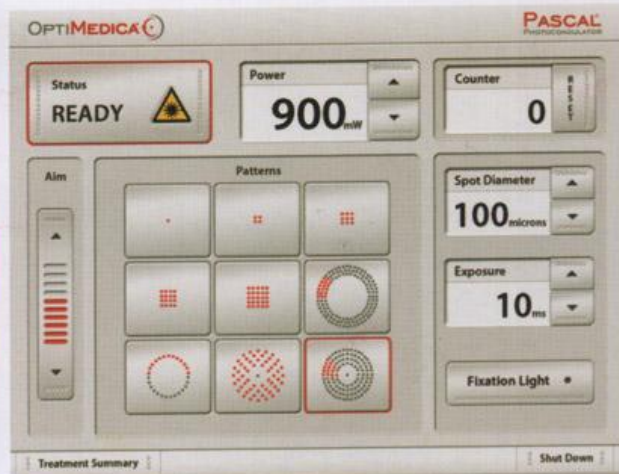
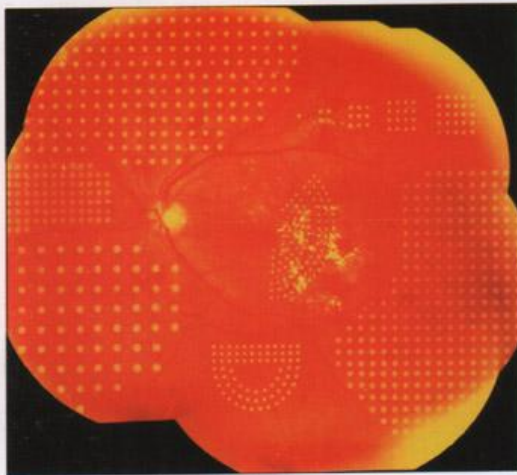
A Revolutionary Step in Retinal Laser

Laser Photocoagulation has been the second most common eye procedure after cataract extractions. It is used to treat retinal diseases such as diabetic retinopathy, retinal venous occlusions, retinal vasculitis, central serous retinopathy, retinal holes, tears, etc.

Laser photocoagulation can be done by different lasers such as argon, henon, diode, etc. We at our centre are using green laser for photocoagulation, both the conventional and the latest- "PASCAL".

How is laser photocoagulation done?

It is a non-surgical procedure. The laser beam is focused precisely on the diseased area and the procedure is accomplished by controlling the power, exposure and size of the light beam.



What is PASCAL ??

Pattern scan laser photocoagulation is a fully integrated system designed to treat retinal diseases using a single spot or a predetermined pattern array of upto 56 spots.

PASCAL represents a significant leap forward from single spot green laser photocoagulation.

In conventional laser, one foot pedal depression leads to one shot to the retina while in PASCAL laser with a single depression of foot switch multiple spots can be applied almost simultaneously.

What are the benefits of PASCAL??

The **speed**

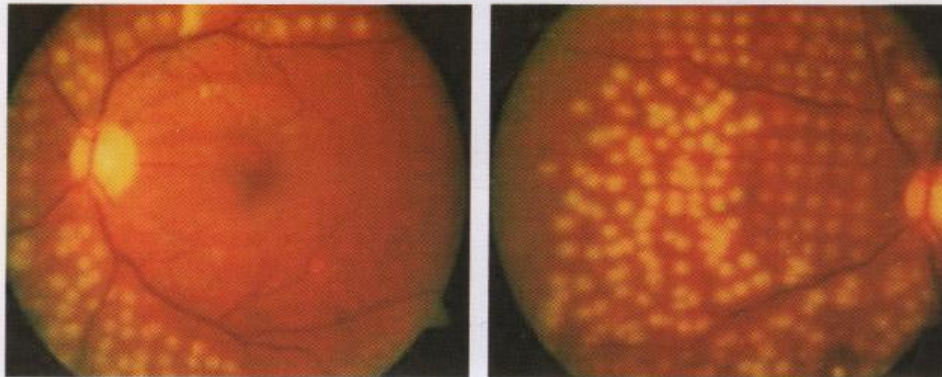
More efficient than standard single shot photocoagulation. Upto 56 spots in less than 0.6 seconds.

Improved **comfort**

Because patients are likely to experience less discomfort and therefore have more tolerance for the procedure.

Reduce the number of the **laser sessions**

Because patients are likely to experience less discomfort and therefore have more tolerance for the procedure, it is possible to combine multiple sessions spread over repeated visits as necessary in panretinal photocoagulation (PRP) into a single session.



Advanced **Precision**

The PASCAL burns are more precisely spaced and more uniform than the conventional single-spot burns.

This is of particular benefit in macular grid treatment (used in macular edema), provides an improved margin of safety and dosimetry control when compared with single shot treatments, Unlike the irregular pattern placement obtained in single shot photocoagulation, PASCAL delivers more even pattern burns.

Lesser **Adverse Effects**

The shorter pulse durations require less total energy to produce burns, there is less spreading, less choroidal heating and more uniform energy distribution.

Available Facilities

- **Phacoemulsification:** For stitchless cataract surgery
- **Intraocular lens implantation:** Posterior chamber (in the bag), Intraocular lens implantation in congenital cataract, Secondary implantation
- **Glaucoma clinic:** Automated perimetry, Gonioscopy, HRT II, Glaucoma surgery
- **Fundus photography:** Fundus fluorescein angiography
- **Retino vitreal surgery:** Retinal detachment, Posterior vitrectomy, Fluid air exchange & pneumoretinopaxy, Retinal detachment + Vitrectomy + Silicon oil injection
- **Diode laser:** For renal diseases, Rental detachment, Diabetic retinopathy
- **Yag laser**
- **Squint surgery for:** Horizontal muscles, Vertical muscles, Oblique muscles
- **Oculoplastic Surgery**
- **Ultra Sonography:** A Scan, B Scan
- **A.P. Length Measurement**
- **Auto Refractometer**
- **O.C.T. For Retina**

152, Kanchanbag, opp. Airtel, Indore
Phone: 0731- 2511333, 2525333

1, Shiv Vilas palace, Rajbada, Indore
Phone: 0731- 2539595, 2536822

